

FAG

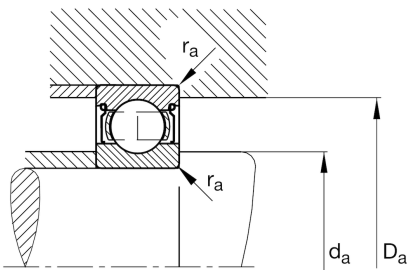
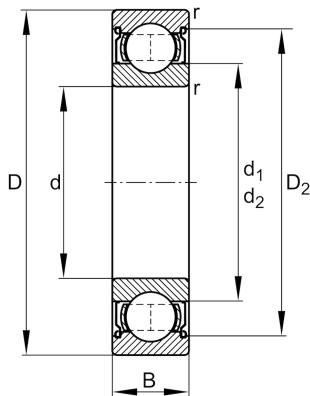
623-2Z

Deep groove ball bearing

Schaeffler ID:
0383908680000

Deep groove ball bearing 62...-2Z, single row, shields, steel sheet metal cage

Technical information

**Main Dimensions & Performance Data**

d	3 mm	Bore diameter
D	10 mm	Outside diameter
B	4 mm	Width
C_r	641 N	Basic dynamic load rating, radial
C_{0r}	226 N	Basic static load rating, radial
C_{ur}	11.7 N	Fatigue load limit, radial
n_G	81,000 1/min	Limiting speed
n_{gr}	59,000 1/min	Reference speed
	2 g	Weight

Dimensions

r_{min}	0.15 mm	Minimum chamfer dimension
D_2	7.98 mm	Caliber diameter outer ring
d_2	4.35 mm	Caliber diameter inner ring

Mounting dimensions

$d_{a min}$	4.4 mm	Minimum diameter shaft shoulder
$D_{a max}$	8.6 mm	Maximum diameter of housing shoulder
$r_{a max}$	0.15 mm	Maximum fillet radius

Calculation factors

f_0	12.8	Calculation factor
-------	------	--------------------

Temperature range

T_{min}	-30 °C	Operating temperature min.
T_{max}	120 °C	Operating temperature max.